

FoodStar

Quick Start Guide



Application Software for Star-Oddi data logging system



STAR : ODDI

Logging Life Science

Table of Contents

1	Downloading and Installing FoodStar.....	3
2	Connecting to a recorder.....	4
2.1	Communication Box.....	4
2.2	Connection Wizard.....	5
3	Setting up the recorder and retrieving data.....	6
3.1	Choose the recorder type.....	6
3.2	Communication.....	6
3.3	Connect to the recorder.....	6
3.4	Set new measurement sequence.....	7
3.5	Disconnect recorder.....	9
3.6	Download data.....	10
3.7	View data.....	10
4	Help menu.....	11

This is the Quick Start Guide for **FoodStar**. The whole user manual is included with the software under the Help menu and on the Star-Oddi website: <http://star-oddi.com/online-support/user-manuals/>.

Changes may be made without notice.



1 Downloading and Installing FoodStar

To download **FoodStar** visit: www.star-oddi.com/downloads. To install the program, follow the automatic InstallShield Wizard.

During installation you need to enter the product key found on the inside of the accompanying cover. Please keep the product key in a safe location as you may need it for future use. The product key works for multiple computers on the same network.



2 Connecting to a recorder

2.1 Communication Box

The Communication Box is a USB compatible communication interface, specially designed to communicate with DST recorders wirelessly via RF (radio frequency). USB driver should automatically install on the computer, if not then visit www.star-oddi.com/downloads.

The Communication Box has three diodes:

1. **Red** – shows that power is fed to the Communication Box.
2. **Yellow** – shows that **FoodStar** has made connection with the box and the correct COM port has been selected..
3. **Green** – shows that the recorder is connected.

You may need to use the Connection Wizard to get the yellow and green lights. See chapter 2.2.

The green light will not turn on unless the red and the yellow lights are on. The recorder is inserted into the box as shown in the figure below. Please make sure that the logger is dry.

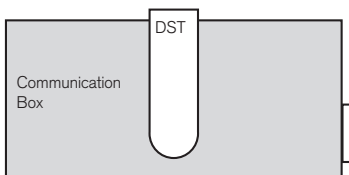


Figure 2.1 Inserting recorder into the Communication Box



2.2 Connection Wizard

If you are starting the software for the first time, you will be asked if you want the Connection Wizard to open automatically each time you start FoodStar. If you change your mind you can always change the settings under **Settings-Options-Startup**.

If you wish to program and start up the logger manually go to chapter 3.

Connect the USB cable between the PC and Com Box and the selected port will appear in the wizard window. Insert the DST into the box, the selected com port will turn green.

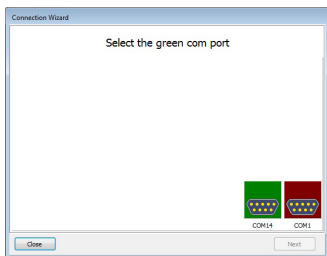


Figure 2.2 Com port wizard

In the Connection Wizard, click once on the green-lit port and select Next or double-click on the port.

The Connection Wizard opens:

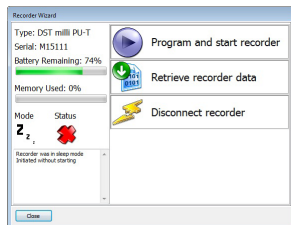


Figure 2.3 Follow the instructions in the wizard



3 Setting up the recorder and retrieving data

If you have set up the logger using the wizard, then please go to 3.4

3.1 Choose the recorder type

Choose the recorder type in the **File** menu, **New Recorder Type**.

3.2 Communication

Connect the Communication Box as described in chapter 2.

3.3 Connect to the recorder

Choose **Recorder** and then **Connect**. A window appears with information on the recorder's mode:

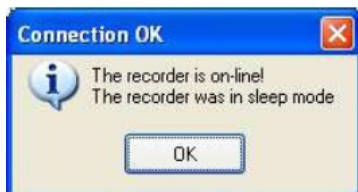


Figure 3.1 Connecting to the recorder

Press **OK**. The Recorder is now on-line, as indicated at the bottom of the **FoodStar** window.



3.4 Set new measurement sequence

Choose the **Edit menu** and **New Measurement Sequence Definition** and then either **Single recording interval** or **Multiple recording intervals**. If choosing single interval, the following window appears:

Set New Measurement Sequence

Start Time

Start date: 15.3.2017

Start time: Hour 13 Min 35

Set Mode

Single mode

Multi mode

Use Template

Use Default

Previous

Measurement Interval Time

Hours: 0

Minutes: 0

Seconds: 1

Primary / secondary - definition

Temp-pressure normal

Temperature as primary

Pressure as primary

Secondary counter: 0

Values allowed are 0,3,5,7,9,.255

Save this NMS definition as a Template (file)

OK Cancel

Figure 3.2 Measurement sequence definition

Set the start time of recording and the sampling interval.

If you want to program several recorders with the same sampling interval and start time, it is recommended to select **Multi Mode** under **Set Mode**.



Parameters can be set as primary and secondary with different sampling frequency.

FoodStar offers the option of setting up more than one sampling interval within a measurement sequence. Please refer to the User Manual.

After the settings have been selected, press the **OK button**.

If you are using the wizard, the software will automatically start the new measurement sequence (start recording) and disconnect the logger. If not, choose the **Recorder menu** and **Start New Measurement Sequence command**.

A window appears on the screen in order to verify the settings to be downloaded into the recorder:

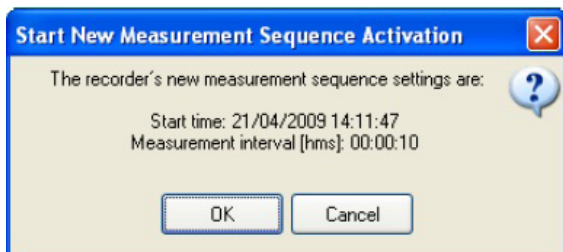


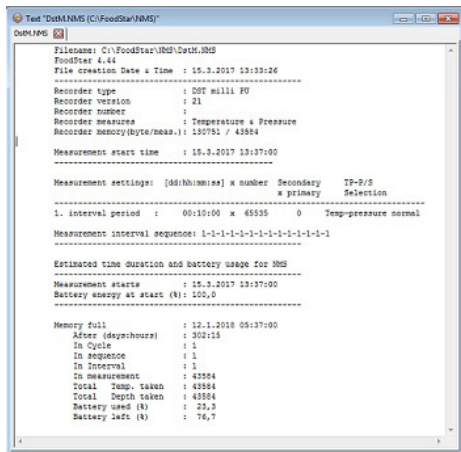
Figure 3.3 Start new measurement sequence

Press **OK** and the settings will be downloaded into the recorder. A window pops up confirming that it is in measurement mode.



New Measurement Sequence (NMS) Calculation

After acknowledging the interval programming window, an NMS file automatically opens showing calculations on when the recorder's memory fills up and battery consumption estimation. It can be helpful to do calculations on different interval examples to help deciding on what interval to use.



```

Test "DutM.NMS (C:\FoodStar\NMS")
DutM.NMS
-----
Filename: C:\FoodStar\NMS\DutM.NMS
FoodStar 4.44
File creation Date & Time : 15.3.2017 13:33:26
-----
Recorder type      : DDT milli PU
Recorder version   : 21
Recorder number    :
Recorder measure   : Temperature & Pressure
Recorder memory(byte/meas.): 130751 / 43584
Measurement start time : 15.3.2017 13:37:00
-----
Measurement settings: [ddhh:mm:ss] x number Secondary TP-P/S
                    x primary Selection
-----
1. Interval period : 00:10:00 x 65535 0 Temp-pressure normal
Measurement interval sequence: 1-1-1-1-1-1-1-1-1-1-1-1-1-1-1-1
-----
Estimated time duration and battery usage for NMS
Measurement starts : 15.3.2017 13:37:00
Battery usage at start (h): 105,0
-----
Memory full : 12.1.2018 05:37:00
After (day:hours) : 302:13
In Cycle : 1
In sequence : 1
In interval : 1
In measurement : 43584
Total Temp. taken : 43584
Total Depth taken : 43584
Battery used (h) : 25,2
Battery left (h) : 76,7
  
```

Figure 3.4 Results from NMS calculation

3.5 Disconnect recorder

After the recorder has been set up for measuring, it should be removed from the Communication Box. If the recorder is not put in measurement mode, it will automatically go into sleep mode when removed from the box.



3.6 Download data

When connecting to a logger after a measurement period, the following window appears:

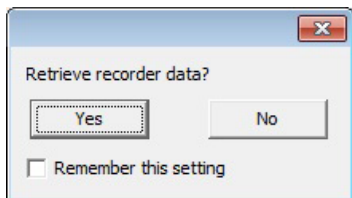


Figure 3.5 Retrieve Data

Click **Yes** if you wish to retrieve the data, click **No** if you would like to retrieve it later. If you are not using the wizard choose the **Recorder menu, Connect** and the **Retrieve Data command**. Data is automatically stored in the **FoodStar** directory on the computer.

You can repeatedly read the data without erasing it from the memory. Each time data is retrieved, a new file will automatically be created. The name of the data file consists of the measurement sequence number and the serial number of the recorder. The recorder cannot be programmed with new settings if it contains data that has not been retrieved. New recordings overwrite previous recordings that have been retrieved.

After you have retrieved the data you can either start a new measurement sequence or disconnect and put the recorder into sleep mode.



3.7 View data

When data is retrieved from the recorder, a new file will automatically be created and opened in graphical and tabular form.

To open existing data files on the computer, choose the **File** menu, and **Open > Browse for Recorder Information Files (*.INI *.RID)**. The data (DAT file) can be exported to other programs for further analysis. In the graphical window there is a button called **Export as Workbook** where you can export the data to Excel.



4 Help menu

User manual

Select **User Manual** to open the recorder's User Manual.

Troubleshooting

Select Troubleshooting to open the Trouble-Shooter.

Check for updates

FoodStar will automatically search the Star-Oddi website every time the program runs for the latest version of the software, User Manual, Trouble-Shooter.

This can be changed under **Settings-Options-Updates**.

You can also check for updates manually by choosing **Help-Check for Updates**.

Submit ticket

Select Submit Ticket to send a ticket directly from the application to Star-Oddi's support department.